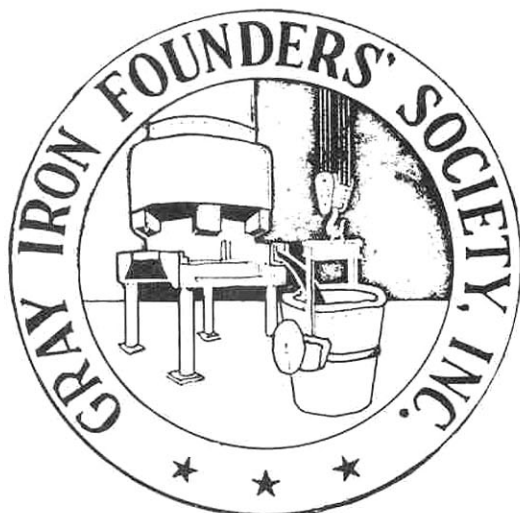


MEMBER

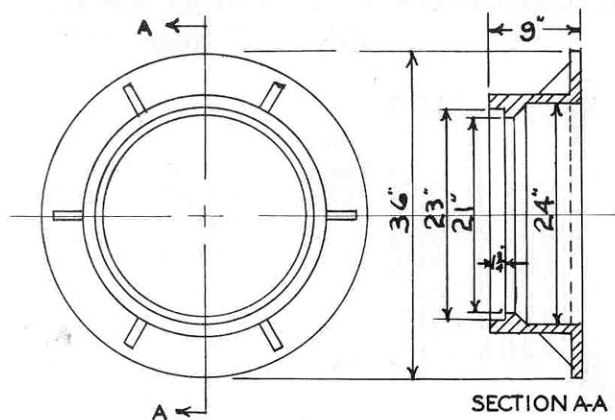


*Lincoln Foundry*

1803 - DELAVAN LINCOLN, ILLINOIS

PHONE 1923

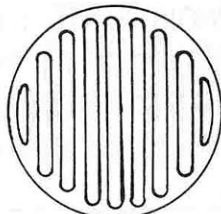
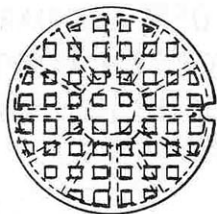
## ILLINOIS STATE HIGHWAY DEPT STANDARD TYPE-I MANHOLE FRAME & COVERS



**WEIGHT OF FRAME · 390 LBS.**

**CLOSED - LID**

**OPEN - LID**



DIA OF COVER  $22 \frac{3}{4}$ "  
 DEPTH OF COVER  $1 \frac{3}{4}$ "  
 WEIGHT OF COVER 150 LBS.

DIA. OF COVER  $22 \frac{3}{4}$ "  
 DEPTH OF COVER  $1 \frac{3}{4}$ "  
 WEIGHT OF COVER 116 LBS.

**SEE I.S.H.D. STD. DRWG. 1516 A FOR DETAILS**



LINCOLN ILL

LINCOLN FOUNDRY

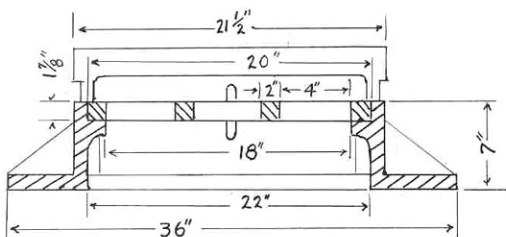




LINCOLN FOUNDRY LINCOLN ILL.

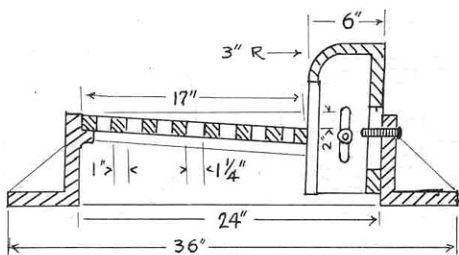
Lincoln Foundry

## CATCH BASIN INLET WITH OPEN CURB BOX



CURB BOX ADJUSTABLE 4" TO 9"

TOTAL WEIGHT 400 LBS.



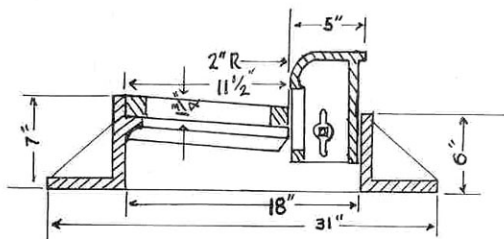
IDEAL FOR SUBDIVISION OR  
WHEREVER A LIGHT INLET IS  
CALLED FOR

LINCOLN FOUNDRY LINCOLN ILL

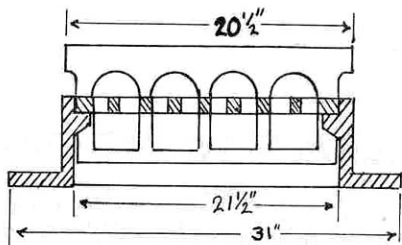
A close-up photograph of a weathered, rusty metal storm drain cover. The cover is rectangular and features a raised, embossed border with the text "LINCOLN FOUNDRY LINCOLN ILL" in all caps. Below the border is a recessed area containing a grate made of several parallel, horizontal metal bars. The entire unit is set within a concrete curb, with some sparse green weeds and grass growing around the edges. The metal shows significant signs of age and oxidation.

# CATCH BASIN FOR NARROW GUTTER

CURB BOX ADJUSTABLE  
4" TO 10"



FOR 12" INCH GUTTER. ALSO FURNISHED WITH OPEN CURB BOX



FRAME 240 LBS.  
GRATE 60 LBS.  
TOTAL 300 LBS.



A rusty metal storm drain cover is set in a concrete curb. The cover features five arched openings and is inscribed with the text "LINGOLN FOUNDRY LINGOLN ILL." in a sans-serif font. In front of the cover is a metal grate with several parallel slats. The surrounding area includes grass and asphalt pavement.

LINGOLN FOUNDRY LINGOLN ILL.

